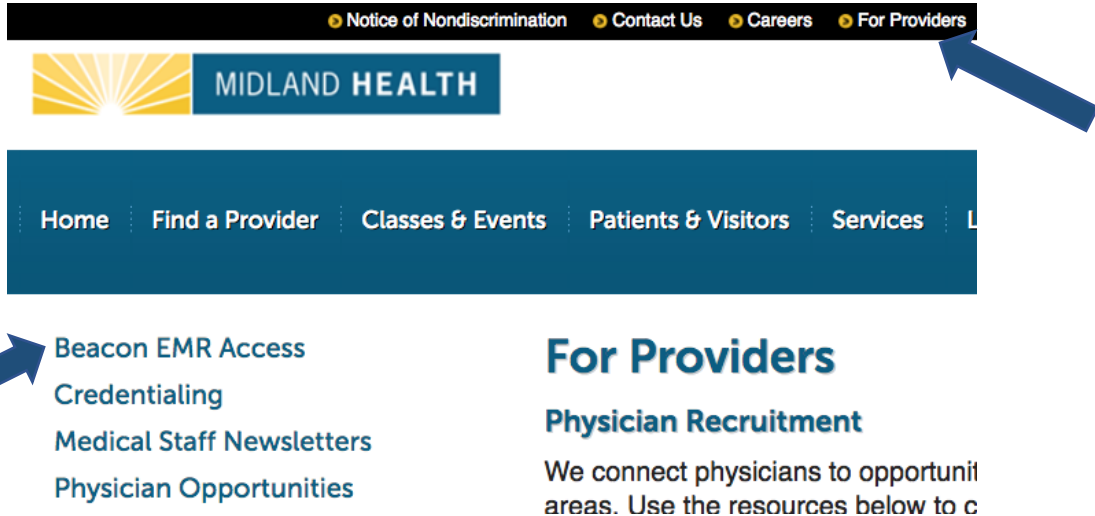


# Accessing Beacon EMR for Midland Health

## Initial Setup: (required once per computer)

- Download the Citrix Receiver at <http://midlandhealth.org>
- It can be found under “For Providers” on the left-hand side of the page



- Click “Download Citrix Receiver for Windows”

## Beacon EMR Access

[Download Citrix Receiver for Windows](#)

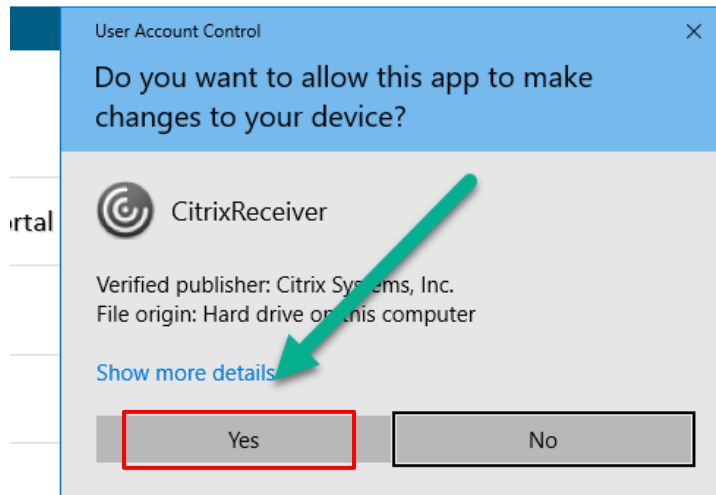
[Download Citrix Receiver for Mac](#)

- From the box at the bottom of your screen, select “Run”



Please call the Midland Health help desk at (432)221-4040 if you need assistance.

- From this screen, select “Yes”

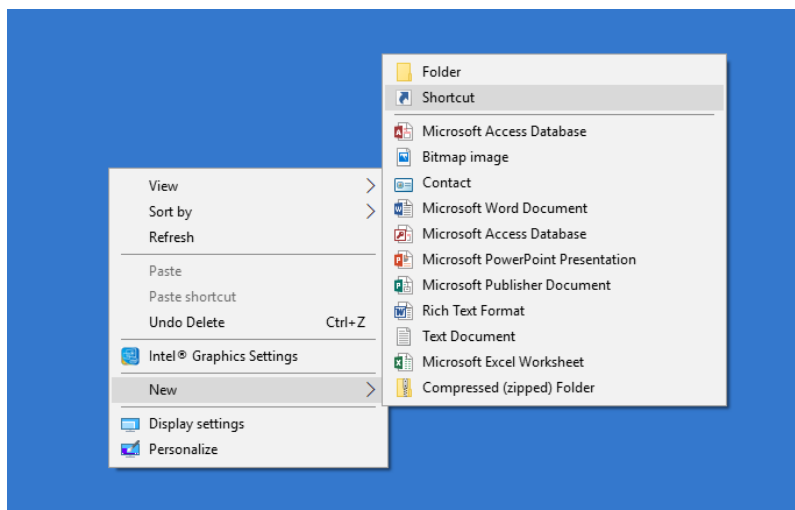


**Your Citrix receiver is now installed. You are ready to log in!**



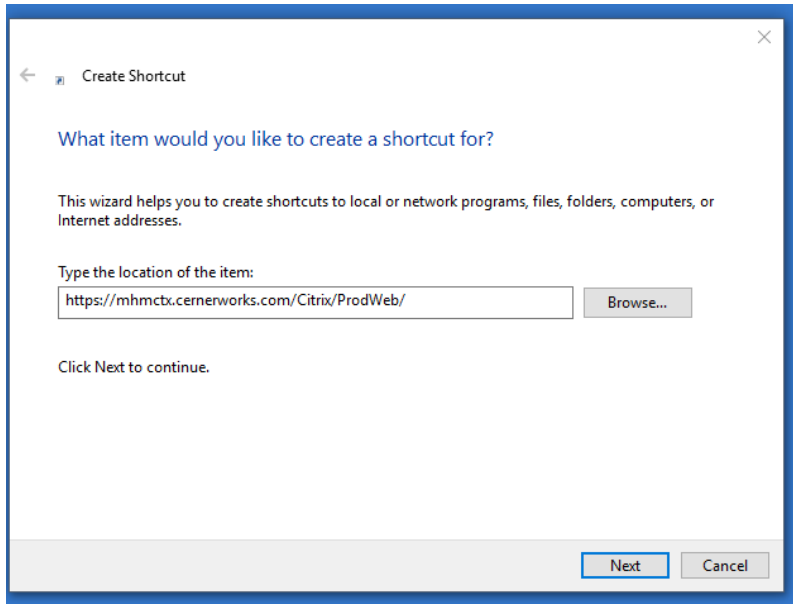
**Optional:** We recommend that you add this link to your desktop as a shortcut for easy access!

- Go to your desktop or computer home screen.
- Right Click and Select “New”
- Select “Shortcut”

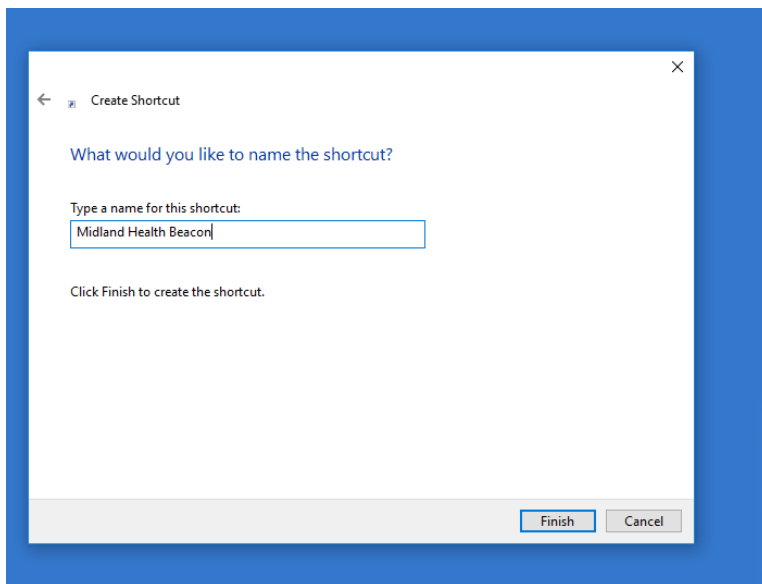


Please call the Midland Health help desk at (432)221-4040 if you need assistance.

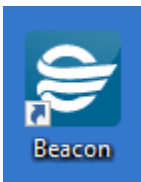
- In the location space, type in <https://mhmctx.cernerwork.com/citrix/prodweb/> and click “Next”



- In the name space, we recommend “Midland Health Beacon”



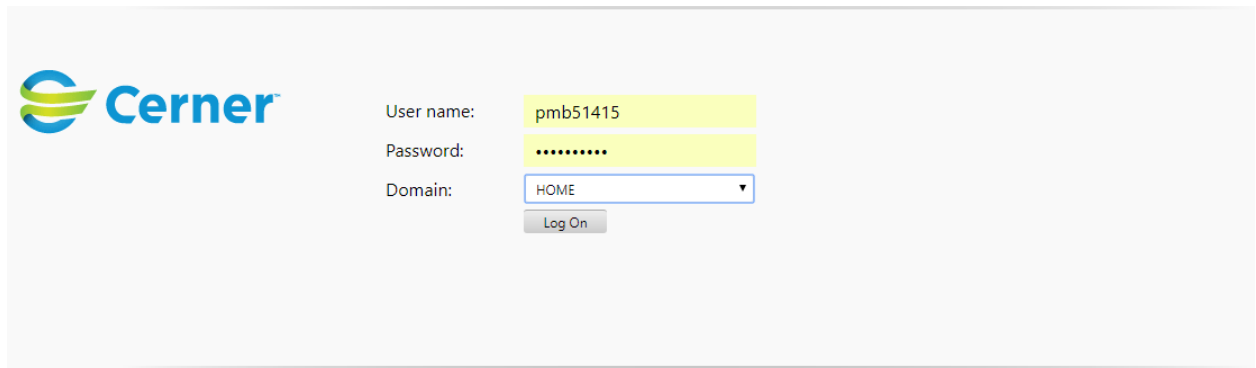
- Your shortcut will appear on your desktop. Double click to enter Beacon.



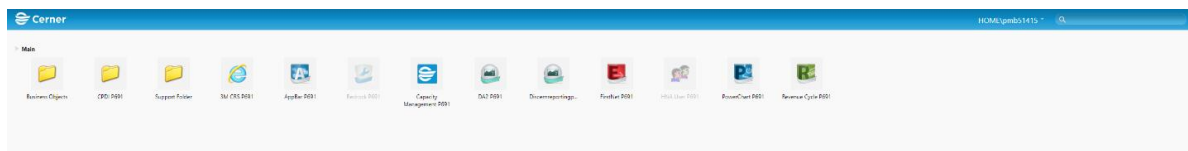
Please call the Midland Health help desk at (432)221-4040 if you need assistance.

## Ongoing Access:

- Visit the Cernerworks Citrix Storefront: <https://mhmctx.cernerworks.com/Citrix/ProdWeb/>
- Enter your Midland Memorial Hospital username and password.
  - Your user name is in the format of initial and unique MH Identifier. For example, Dr. George Washington, Doctor # 12345 would log in with GW12345.
  - If you need assistance with your user name or password, please call the Midland Health help desk at (432)221-4040.
- Make sure the domain is set to "HOME"



The screenshot shows the Cerner login interface. On the left is the Cerner logo. To the right, there are three input fields: 'User name:' containing 'pmb51415', 'Password:' containing masked characters, and 'Domain:' with a dropdown menu showing 'HOME'. Below these fields is a 'Log On' button.



- After you log on you should see your Cerner applications. Double click the icon to launch your application
- Log in to the application using your user name and password

Please call the Midland Health help desk at (432)221-4040 if you need assistance.